

# Stormwater Mapping

Naomi Farkas

3/27/21

**SUSTAINABLE**  
**PRINCETON.**

**CAPERS**

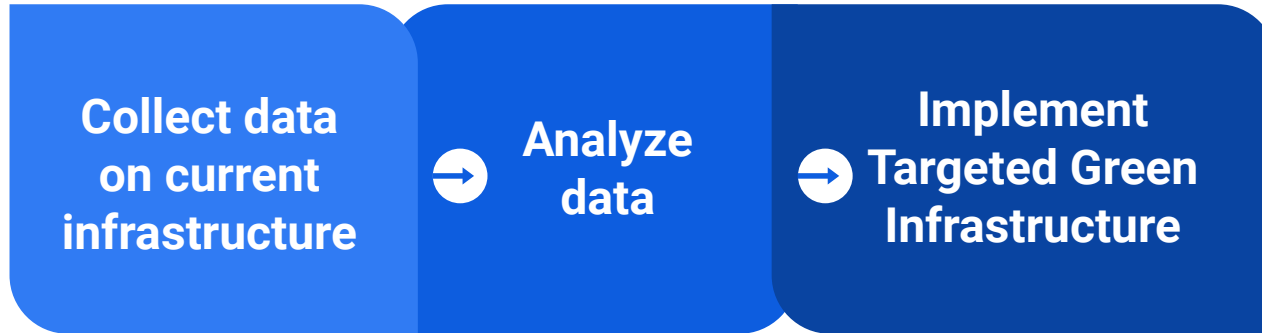


**PRINCETON**  
**UNIVERSITY**



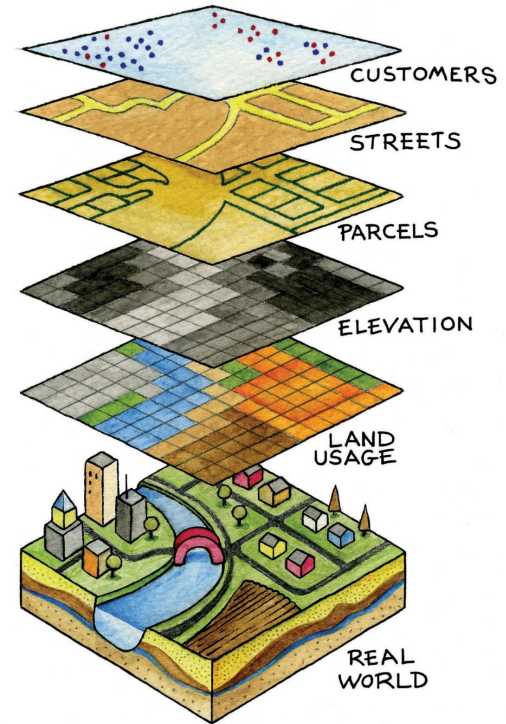
# Flooding in Princeton

- Runoff/flooding is becoming more frequent and intense
- Infrastructure needs repairs/changes



# Geographic Information System (GIS)

- Computer based tool/system
- Data collection/visualization/analysis
  - Geographic data- has a geographic location
- Layers of information
  - street/buildings/boundaries
- ArcGIS



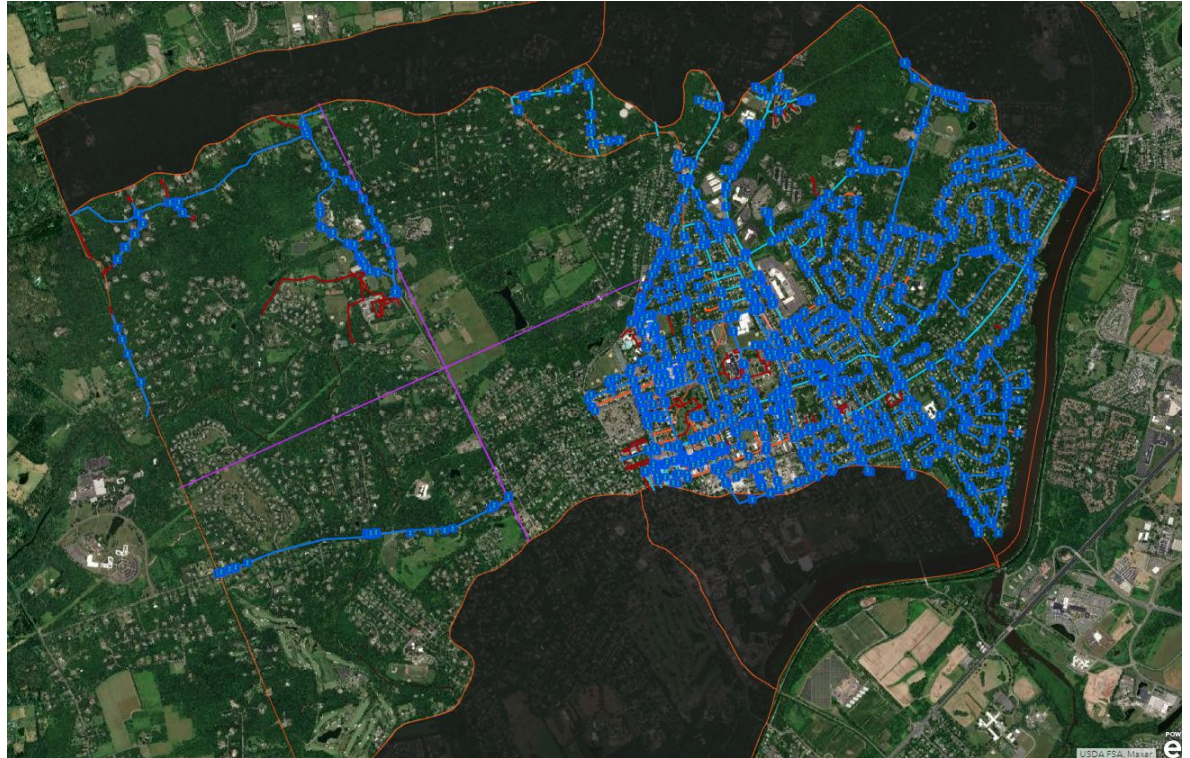
# Current Stormwater System

- Inlet, storm sewers, stormwater drains
  - Drain water from impervious surfaces
    - Impervious: water cannot pass through
    - Roads, sidewalks, parking lots
    - Stormwater runoff
- Data collected with Google Maps
  - Location
  - Picture
  - Inlet Type
  - Year of Imagery
  - Labels
  - Bike Safe
  - Condition



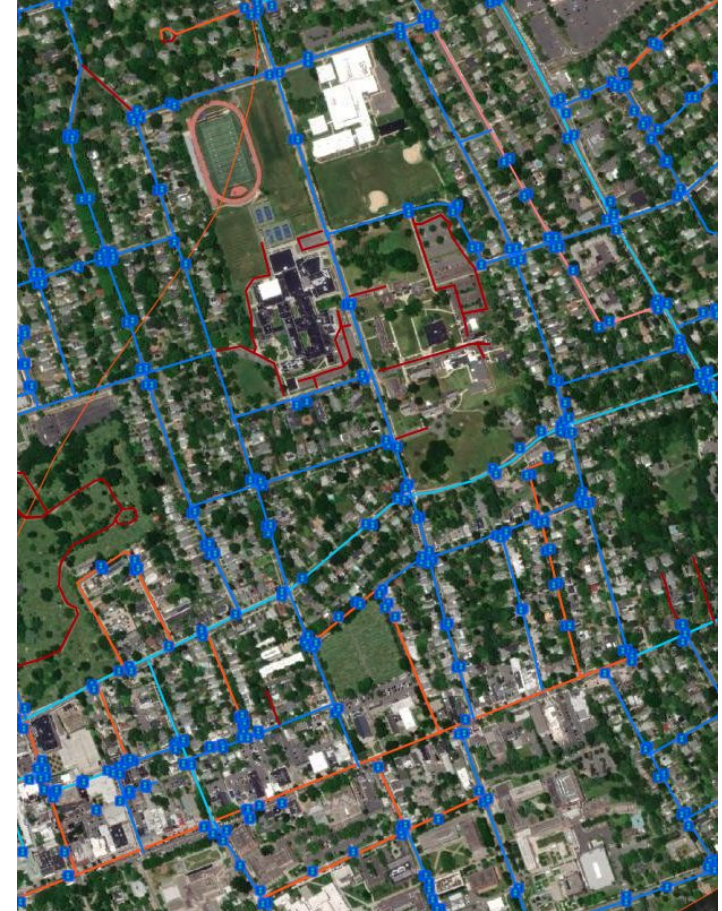
# Progress

- Harry's Brook Area
- Blue dots = inlets
- Blue lines = streets reviewed
- 1538 inlets mapped so far



# Next Steps

- Finish google maps part by April 2021
- Finish in-person inspections by Jan 2022
  - Verify Google Maps images
  - Collect data in obstructed/blurry areas
- Analyze data
- Green Infrastructure to alleviate flooding



# Thank You

- Andrew Filippi, Tammy Sands, Karen Zemble, Christine Symington
- Khiara Berkowitz-Slar, Jack Green, James Albanese, Aly Guindo
- Nicolas Choquette-Levy, William Atkinson
- CAPERS, Sustainable Princeton, Princeton Environmental Commission





# Sources

- <https://planetprinceton.com/2014/05/01/photos-of-princeton-area-flooding/>
- <https://planetprinceton.com/2018/05/27/several-princeton-area-roads-closed-due-to-flooding-11-a-m-sunday/>
- <https://www.jmu.edu/facmgt/gis/index.shtml>